

Release and Installation Notes

BemTrain Version 3.4.1



Release Overview.

BemTrain update to 3.4.1 is a maintenance release and therefore recommended for all BemTrain users.

As the versions post 3.3.0 for the most part were incremental facility test releases with limited distribution, this release note covers all changes from 3.3.0 to 3.4.1.

Please refer to the change list for full details of this release.

For all enquiries regarding BemTrain, please contact Lyndon Downing.

Email: lyndon@moto-sheets.com



Contents

Release and Installation Notes BemTrain Version 3.4.1	1
Release Overview.....	1
Changes from 3.4.0 to 3.4.1 10-Jun-24.....	3
Changes from 3.3.2.1 to 3.4.0 14-Jun-23.....	3
Changes from 3.3.2.0 to 3.3.2.1 30-Jan-23.....	3
Changes from 3.3.1.10 to 3.3.2.0 28-Jan-23.....	3
Changes from 3.3.1.9 to 3.3.1.10 05-Oct-22.....	4
Changes from 3.3.1.8 to 3.3.1.9 02-Oct-22.....	5
Changes from 3.3.1.7 to 3.3.1.8 09-Aug-22.....	6
Changes from 3.3.1.6 to 3.3.1.7 03-Aug-22.....	6
Changes from 3.3.1.5 to 3.3.1.6 26-Jun-22.....	6
Changes in previous development versions.....	7
Changes from 3.3.1.4 to 3.3.1.5 22-Jun-22.....	7
Changes from 3.3.1.3 to 3.3.1.4 26-Apr-22.....	7
Changes from 3.3.1.2 to 3.3.1.3 13-Mar-22.....	7
Changes from 3.3.1.1 to 3.3.1.2 25-Feb-22.....	7
Changes from 3.3.1.0 to 3.3.1.1 05-Feb-22.....	8
Changes from 3.3.0 to 3.3.1.0 19-Jan-22.....	9
Changes from earlier general release versions. From 3.2.5 to 3.3.0 02-Nov-21.....	11
Changes from 3.2.3.2 to 3.2.5 02-Jun-2021.....	12
Installing BemTrain 3.4.1	13
Prerequisites.....	13
User and Upgrade Codes.....	13
Removal of Earlier Version(s).....	13
Install BemTrain.....	14
User Logo Files.....	16
First Run Setup.....	17
Operating System.....	18
Microsoft Office.....	18
Microsoft Updates.....	19



Changes from 3.4.0 to 3.4.1

10-Jun-24

- Corrects a fault when initiating a scoreboard “Rebuild all run records before starting” restart where a currently shown scoreboard display record for a passing manually changed to ignore may still be shown on the scoreboard initially after the restart.

Changes from 3.3.2.1 to 3.4.0

14-Jun-23

- Update to align with BEM changes for 2023 Pump Track World Championship rules but adding “Seeding Open Session” into the operator selected Round list.
- Change so that when a new version is first run, the system default round list is used to populate the user round list so that any new entries will be in the round selection list.

Changes from 3.3.2.0 to 3.3.2.1

30-Jan-23

- Change in strategy for processing passing records so as not to slow down response time when a large number of run records are stored.
Note that the “Experimental Mode” option needs to be selected to enable the fast processing method.
- Correction to a debug error that could occur after a database rebuild.

Changes from 3.3.1.10 to 3.3.2.0

28-Jan-23

- Added a new feature for Point to Point races.
Changes included:
 - Extended maximum lap time into hours.
 - Added a new scoreboard layout for point to point.
 - Created a new point to point JSON report format.



Changes from 3.3.1.9 to 3.3.1.10

05-Oct-22

- Bug fix where wrong scoreboard template (2x8 instead of 1x8) was being used for some large format scoreboards with group display.



Changes from 3.3.1.8 to 3.3.1.9

02-Oct-22

- Added a new version of the auto-run Race Lap Time Scoreboard in a 2 x 8 format showing the Finish Line in the left pane and the Start Loop in the right pane.

Finish Line				Bottom of Hill			
	Men Elite	TIME	Provisional		Men Junior	TIME	Start
AUS	Bob Thompson	55.348	1	GBR	Peter Fletcher	3.055	1
GBR	Blair Cockram	55.486	2	IRL	Brian O'Shey	3.111	2
AUS	Jack Frost	55.679	3	GER	Richard Gackenheimer	3.211	3
GER	Frank Furter	55.769	4	FRA	Peter Southey	3.321	4
AUS	Bruce Strange	55.897	5	NZL	John Munroe	3.336	5
AUS	James Hatfield	56.355	6	AUS	Peter Wilson	3.440	6
AUS	Greg Sherridan	56.790	7	AUS	Garry Rogers	3.692	7
POL	Walter Zironga	57.995	8				

- Note in the screenshot below:
 - The existing Race Lap Time scoreboard's functionality is unchanged with the selection now with an (F) to designate the Finish line only is displayed.
 - The added version Race Lap Time (S+F) scoreboard shows both Start and Finish loop times as per the example above.

- Added a protective patch to avoid a conflict when starting the scoreboard capture when passing records are buffered waiting for processing.



Changes from 3.3.1.7 to 3.3.1.8

09-Aug-22

- Added a protective patch should an error be returned from calls to Windows API dwMilliseconds.

Changes from 3.3.1.6 to 3.3.1.7

03-Aug-22

- Adds HTTP 200 as a valid response from the JSON API and the VideoWall outputs in addition to the existing HTTP 202 valid response.

Changes from 3.3.1.5 to 3.3.1.6

26-Jun-22

- Updated the Scoreboard Control screen to provide a unique display of the Speed Trap time as previously this was shared with the JSON file system messages which could result in speed not being shown.

TIME	RANK	Men	TIME	RANK
		ITA Federico GAMBETTA	11.686	P 1

- Corrected a fault where multiple JSON outputs are selected and one fails the connection test when opening the scoreboard. For that scenario, when the operator elects to continue to open the scoreboard without the particular JSON output, the system may still attempt to generate the JSON report.
- As in previous JSON API development versions, **correction to the missing first intermediate timeline rank for Pump Track Solo Run is still to be replicated in other Pump Track scoreboards.**



Changes in previous development versions.

Changes from 3.3.1.4 to 3.3.1.5

22-Jun-22

- Re-configured the Speed Trap operation to allow for any combination of selections for JSON Virtual, JSON Video Wall or JSON API.
In earlier versions, Speed Trap would only operate with JSON Virtual selected.
- As in previous JSON API development versions, **correction to the missing first intermediate timeline rank for Pump Track Solo Run is still to be replicated in other Pump Track scoreboards.**

Changes from 3.3.1.3 to 3.3.1.4

26-Apr-22

- Correction to a fault preventing to HTTP connection to JSON API server.
- As in previous JSON API development versions, correction to the missing first intermediate timeline rank for Pump Track Solo Run is still to be replicated in other Pump Track scoreboards.

Changes from 3.3.1.2 to 3.3.1.3

13-Mar-22

- Updated JSON scoreboard reports to show:
 - Competition ID
 - Competition Category
 - Competition Round (as selected by the operator)
- Corrected the missing first intermediate timeline rank for Pump Track Solo Run.
(Still to be replicated in other Pump Track scoreboards).

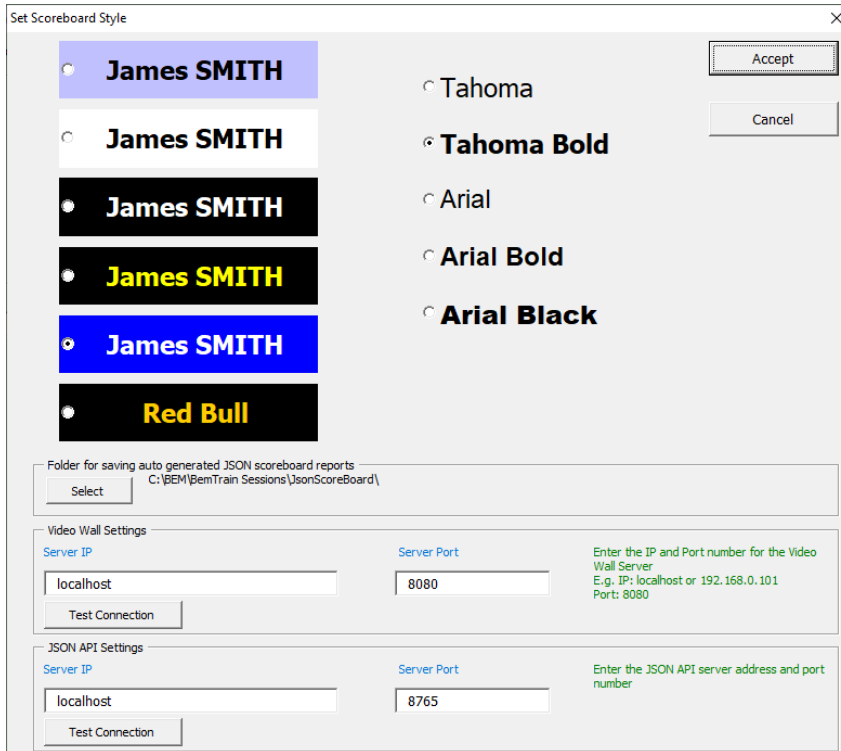
Changes from 3.3.1.1 to 3.3.1.2

25-Feb-22

- Corrects an omission where the Speed Trap JSON reports were not being sent to the VideoWall.
- Add ranking to displayed first intermediate split time in selected scoreboards.
- Add Lap Number in selected scoreboard JSON results.



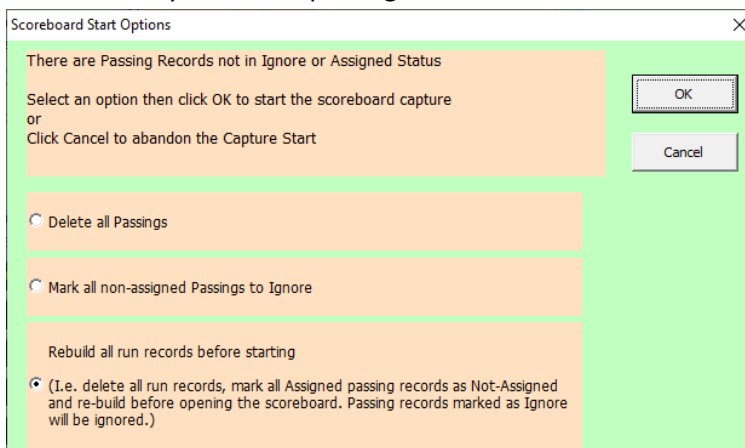
- Added HTTP interface and settings for the JSON API in the Set Scoreboard Style window.



Changes from 3.3.1.0 to 3.3.1.1

05-Feb-22

- Extended the UCI ID inclusion provided only in selected JSON scoreboard reports in version 3.3.1.0 to all JSON scoreboard reports.
- Added a new scoreboard start option to allow selected scoreboards to be re-opened and re-build the database with retained passing records. In conjunction with the new facility allowing an operator to manually create passing record(s), this allows corrections to be made for stray or missed passings.



- Change to allow the Show Passings screen to be displayed when there are no passings stored to allow a manual passing to be added.
- Additional functions buttons have been added to the Show Passings Display screen to:

- Select All passings
- Deselect All passings
- Create a New Passing
- The “New Passing” button opens a new screen where the operator can input the details to create a passing record. I.e.

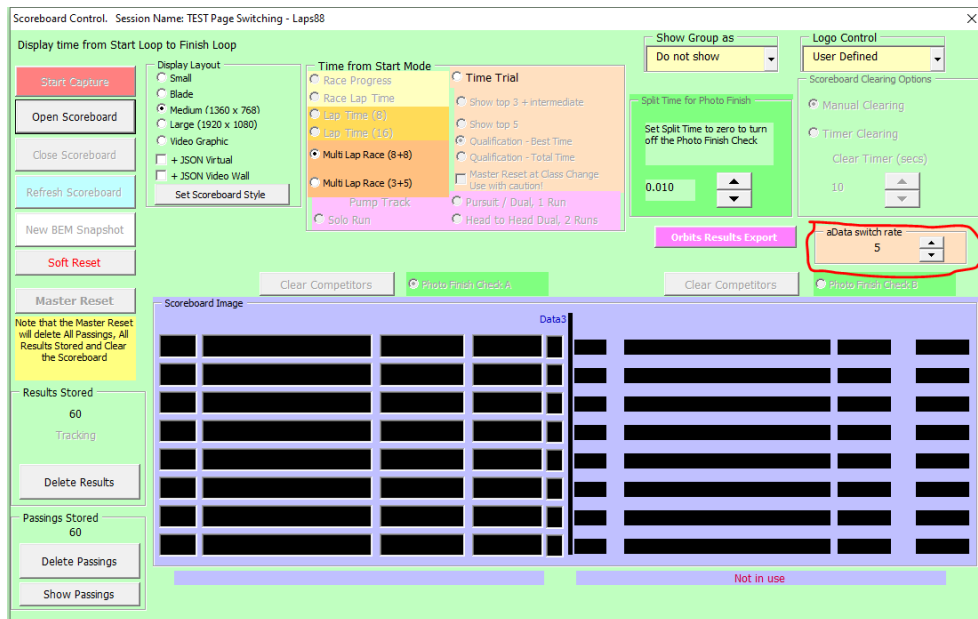
Notes:

- Selection Information shows the selected passing file format from the home screen and the athlete names source selection.
Note that a passing format of **T&S BemTrain Custom 2** must be used where the UCI ID is required to be included in JSON scoreboard files.
- Basic sanity checking for blank fields, non-numeric input and Location not matching existing Timelines is applied to the input data before the passing record is added.
- Chip Date and Chip Time fields must include leading zeros to make up the required number of digits. E.g. A month of 7 to be entered as 07 and a millisecond value of 95 to be entered as 095.

Changes from 3.3.0 to 3.3.1.0

19-Jan-22

- Update scoreboards Qualification – Best Time, Qualification – Total Time and Multi Lap Race (8+8) to:
 - In the left pane, where previously only the top 8 riders were shown, there is the option to auto page through all riders who have completed at least one lap. I.e display changes from 1-8 to 9-16 to 17-24 etc. and then start again from 1-8 after all have been shown.
 - The display time for each page is under operator control with the new “aData switch rate” setting on the Scoreboard Control screen. Settings are from “Note” where the scoreboard functions as previously with only positions 1-8 shown. Values of 1 to 8 progressively increase update speed. I.e. 1 is the slowest update rate / longest display time for each page.



- Json data now includes the UCI ID field for each rider.
 - Json aData sent by file to the Virtual scoreboard or by HTTP to the Video Wall now contains all riders who have completed at least one lap.
- Note that as before, the minimum number of rider fields in the aData will be 8 irrespective of less than 8 riders to be included. The number of rider fields will expand to the number of riders with a completed lap when this is > 8.



Changes from earlier general release versions.

From 3.2.5 to 3.3.0

02-Nov-21

- Added new run modes for:
 - Gate or photocell start with ID loop after the start.
 - Gate or photocell start, photocell finish, no rider ID loop.
- Added new Minimum Format for passing files to contain Transponder, Location, Date and Passing Time only with the intention to improve scoreboard reaction time by reducing the amount of data being handled. Note that this format is to be used only when the transponder to competitor association is made with a .bem event file.
- Update to allow the same 00-09991, 00-09992 or 00-09993 Start Gate transponder format to be specified in BemTrain when running the MyLaps Smart Decoder as is used with the traditional Desktop (red) and Track Side Box ProChip Decoders.
- Add a new feature to allow for multiple intermediate point (split) times during a lap for Multi Lap 3 + 5 scoreboard.
- Added a new feature to allow a single intermediate point (split) time for Time Trial Cumulative times and Time Trial Best time.
- Added new interface for on-site Video Wall scoreboard (Premium version).
- Added a new export of scoreboard results in an Orbits compatible results format that can be used for direct import into BEM (Premium version).



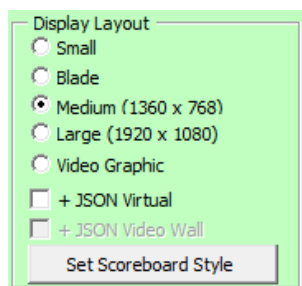
Changes from 3.2.3.2 to 3.2.5

02-Jun-2021

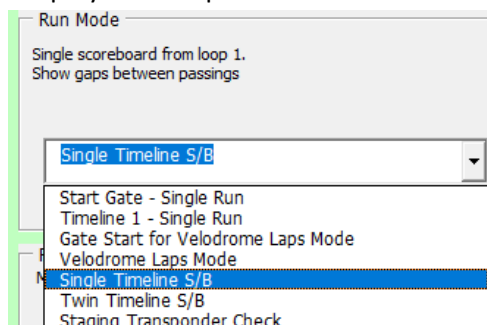
- Revised format of the Staging Check Scoreboard to include Plate and Category fields.

	NAME	CATEGORY	T/PONDER
5	Mercedes SCOTT	Women	TL-36043 10:58:20
7	Zoe NOONAN	Women	NW-52132 10:57:19
4	Johanna JEPHCOTT	Women	RP-01181 10:56:32
2	Annaliese ROKOV	Women	RH-34444 10:55:44
22	Riley BRAS	Men	HR-70039 10:54:55
1	Saya SAKAKIBARA	Women	GN-61321 10:53:50
3	Cassie VOYSEY	Women	PC-66534 10:53:03
21	Alistair SCOTT	Men	FK-25220 10:48:56

- Addition of new scoreboard size optimised for Blade PCs.



- Addition of Json virtual scoreboard output that generates a Json virtual scoreboard output for each scoreboard change with the initial use in conjunction with the advanced BEMGrfix scoreboard developed by moto-sheets.com
- Addition of a Speed Trap function to send calculated speed between two photo-beams to the Json virtual scoreboard.
- Preparation for a future feature to send scoreboard data in Json format to a Video Wall display.
- Added a specific Run Mode for Single Timeline Scoreboard (showing gaps between riders) to simplify the setup of that scoreboard mode.



Installing BemTrain 3.4.1

Prerequisites

Please check that your PC meets the requirements listed in the Operating System and Microsoft Office sections before installing BemTrain and that you have an Upgrade Code for this version.

Note that BemTrain version 3.0.x and later will not run Session files created with versions 2.2.x. and earlier.

If you require access to training data from an earlier Session file after installing the later BemTrain, please email the session file(s) to lyndon.downing@bigpond.com for conversion to the later format.

User and Upgrade Codes

For updates and new installations, an upgraded code is required to complete the installation.

For first time installations, a User Code is required in addition to the upgrade code.

If you do not have you User Code or Upgrade Code, please contact lyndon.downing@bigpond.com


Removal of Earlier Version(s)

All previous versions of BemTrain MUST be uninstalled before installing this update.

Click Start, Control Panel, Programs and Features (Add and Remove Programs in Windows XP)

[Uninstall or change a program](#)

To uninstall a program, select it from the list and then click Uninstall, Change or Repair.

Organise ▾		Uninstall/Change		
Name	Publisher	Installed On	Size	Version
 BemTrain	Bemman	02/11/2021	4.43 MB	3.3.0

In the Programs and Features window, Right click on BemTrain then Left click on Uninstall.

Answer Yes to any prompt required to complete the removal of the earlier version.



Install BemTrain

From the <https://www.moto-sheets.com/index.php?p=manuals> site, download the files:

As this is a development test release only, files are available only from the BEM Download Dropbox folder.

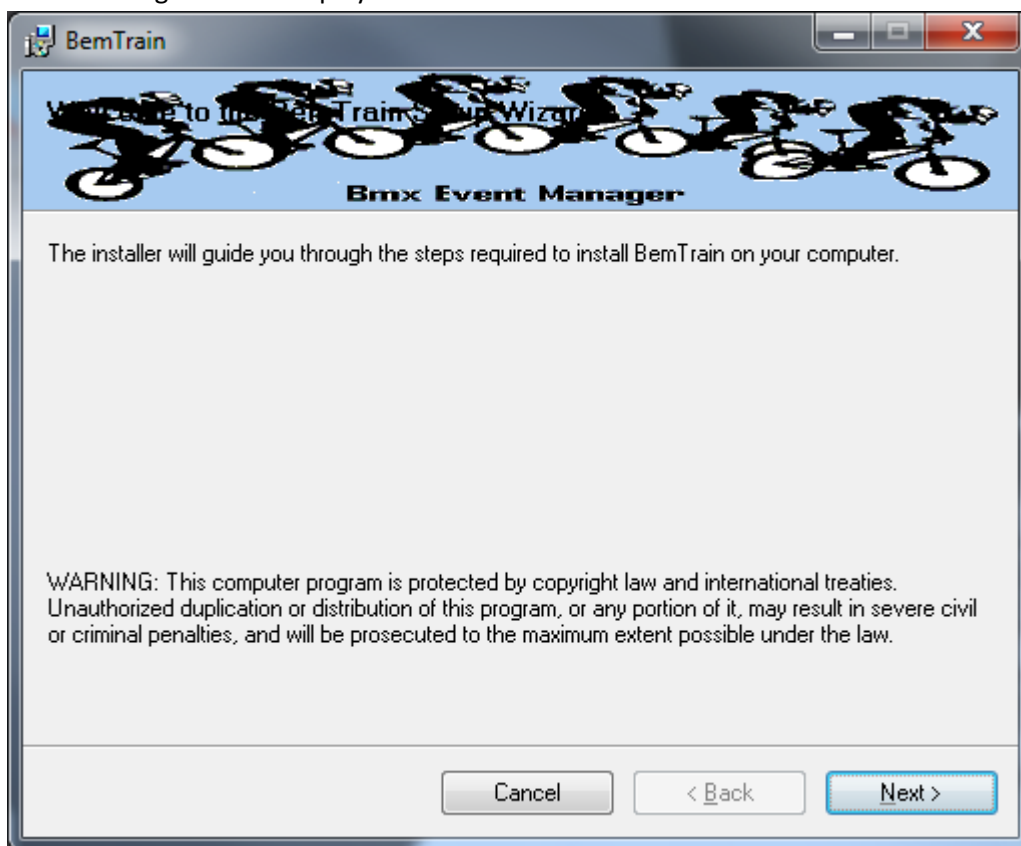
6a BemTrain Production 3-4-1 (zip file)

6b BemTrain Release and Installation Notes – Version 3-4-1 (pdf file)

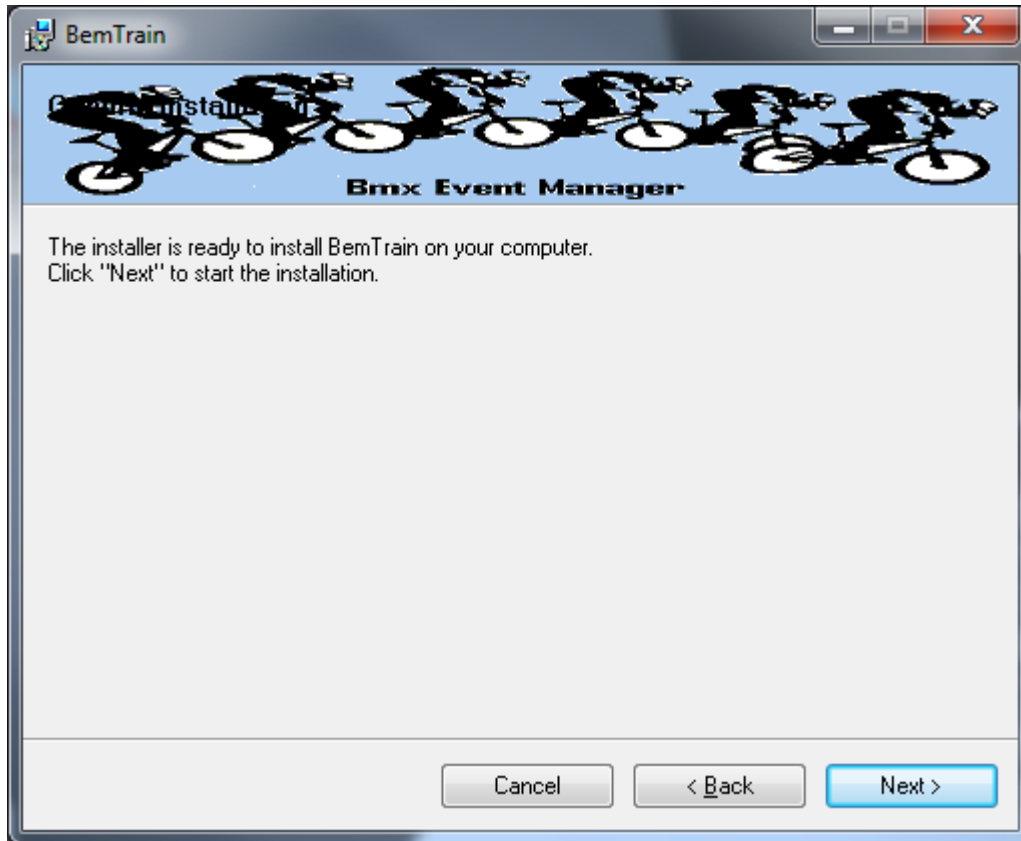
Unzip and save the **6a BemTrain Production 3-4-1.msi** file contained in the **6a BemTrain Production 3-4-1** file.

Double click on the **6a BemTrain Production 3-4-1.msi** file to start the installer.

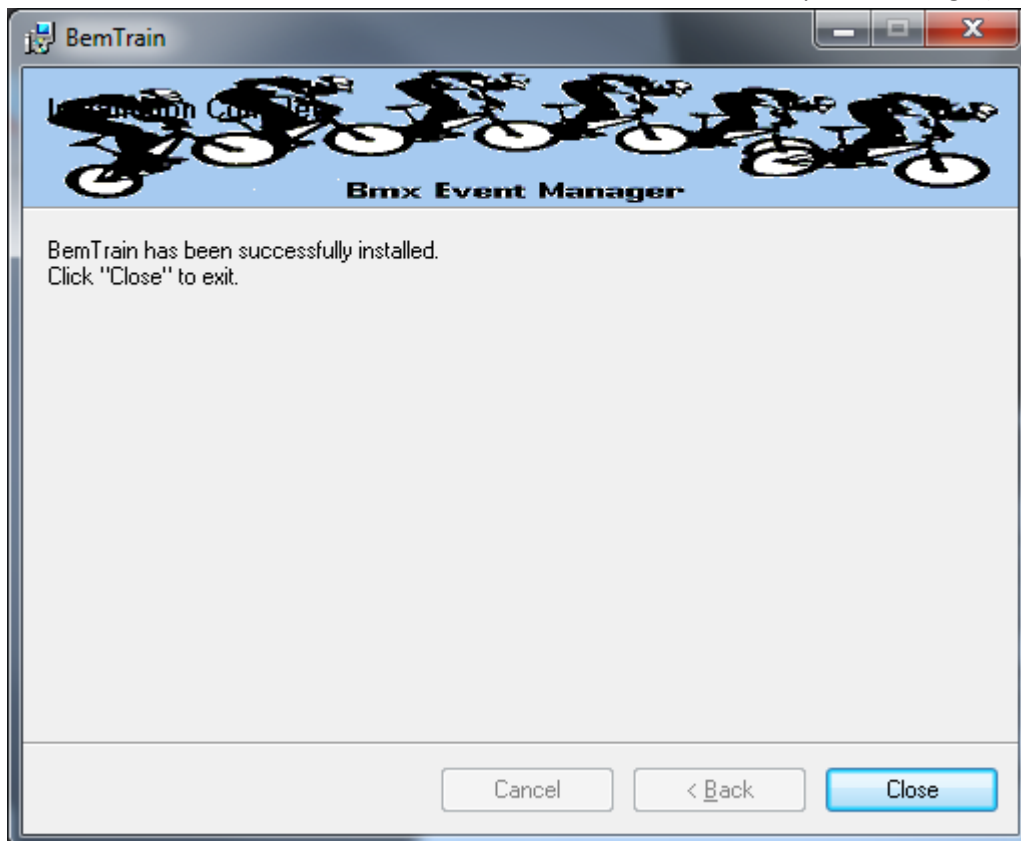
The following screen is displayed.



Click Next to proceed and the following screen is shown



Click Next to start the installation and wait for the Installation Complete Message (below)



Note that the installation is hardcoded into the folder:

C:\BEM\Programs\BemTrain

If not done previously as per step 2 on page 19 of this document, Office 2007 and Office 2010 users should include the path C:\BEM\Programs in the Excel list of trusted locations.

The installation procedure installs the BemTrain program, adds BemTrain in the Bmx Event Manager group in the Programs menu and provides a shortcut on the Desktop.



If you are installing BemTrain for the first time, please refer to the instructions in the distribution e-mail to install the configuration file.

User Logo Files.

If you have previously setup user defined logo files for display on scoreboards for BemTrain version 3.2.2.2 or earlier, then these files must be moved to a new folder for versions 3.2.2.3 and later.

I.e. if you have files named **BemTrainUser_HL_Logo.bmp** and/or **BemTrainUser_HR_Logo.bmp** in folder **C:\BEM\UserData** then please move these files to the folder

C:\BEM\UserData\BemTrain Scoreboard bmp logos

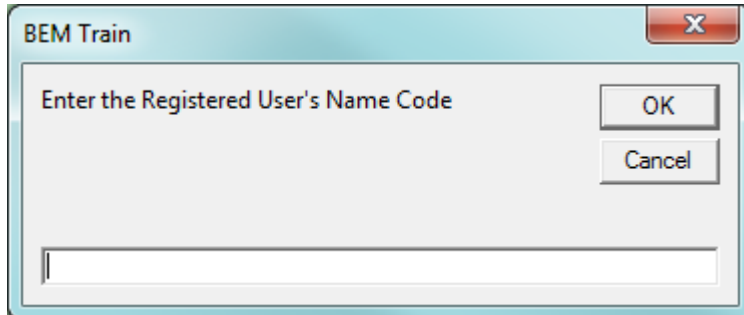


First Run Setup

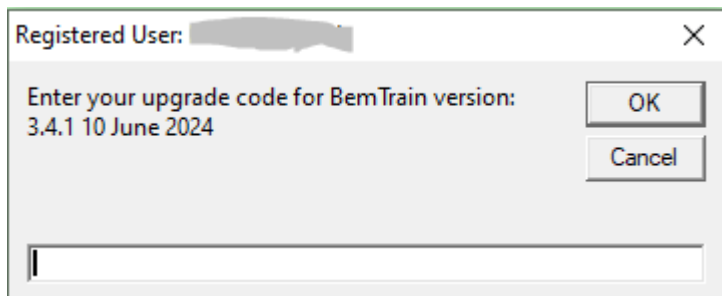
Double click on the BemTrain icon to start the program.

First time installation users will receive the following prompt to enter the Registration Name received with your order confirmation.

If you don't have this information, please contact Lyndon.Downing@bigpond.com



All users will receive the following prompt to enter the upgrade code the first time the upgrade is run:



Enter the code from your release email and click OK to activate the update.

If you don't have this information, please contact lyndon@moto-sheets.com



Operating System

Windows XP, Vista (OK but best avoided if possible), Windows7 and for Windows 8, 8.1 and Windows 10, full versions, not the RT tablet versions. 32 or 64 bit installations of Windows are OK. Use of the Professional rather than the Home versions of Windows are strongly recommended for the superior networking capability.

Microsoft Office

Office 2003, Office 2007 or Office 2010.

BemTrain does not run on Office 2013 or later as Microsoft have not maintained full backwards compatibility with Office 2010, 2007 and 2003 versions.

For new PCs that come pre-installed with an Office version later than 2010, the following options are suggested.

1. If you don't have a specific requirement for the new facilities in the pre-installed version Office and haven't paid the licence fee for that:
 - a. Totally remove Office from the PC.
 - b. Buy and install a legitimate version of Office 2010 from eBay or from a download retailer such as https://www.e-crater.com.au/p/30522352/microsoft-office-2010-pro-plus-32-64-bit?gps=1&id=115926669379&keywords=&gclid=CjwKCAjwm4rqBRBUeIwAwaWjjK60coZew2EOxi9W_eodOHfGc8FKc4vya1IbS3VT41eix1YEFxqnBoCRJgQAvD_BwE
or
https://softwaregeeks.co.uk/product/office2010proplus/?gclid=EAAlQobChMI07_I7NXN4AIVGK6WCh2pWwWhEAYYBCABEgJcpvD_BwE
which will be significantly cheaper than the Office 365 / 2016 licence).
2. If you need to keep the pre-installed Office version on the PC with either Win7, Win8 or Win 10.
 - a. Do a partial installation of Office 2010 installing only Excel 2010 which will happily co-exists with later Office versions.
 - b. To get BemTrain to open with Office 2010 when you also have later Office versions installed then either:
 - i. Open Excel 2010 before clicking on the BemTrain icon.
 - ii. Set up your own shortcuts to BemTrain that direct to Office 2010.
I.e. in the Shortcut Target use

BemTrain

Typical Shortcut Target when Office 2010 is a 32 bit installation

"C:\Program Files (x86)\Microsoft Office\Office14\EXCEL.EXE" "C:\BEM\Programs\BemTrain\BemTrain.xls"

Typical Shortcut Target when Office 2010 is a 64 bit installation

"C:\Program Files\Microsoft Office\Office14\EXCEL.EXE" "C:\BEM\Programs\BemTrain\BemTrain.xls"

To add the shortcut to the start menu, copy and paste or create the shortcut in the following 'Hidden' folder:

C:\Users\username\AppData\Roaming\Microsoft\Windows\Start Menu\Programs

Now open Start Menu > All apps and locate the shortcut(s) you placed. Right-click on it and select Pin to Start.



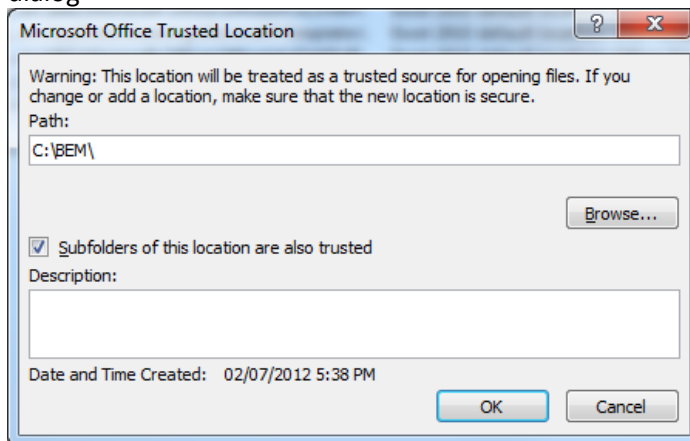
Microsoft Updates

The following preparatory actions if not already implemented on your PC will avoid compatibility problems.

1. If you do not have Windows Update enabled for Auto Update of Windows and other products from Microsoft Update, download and install the latest applicable Office 2003 / 2007 / 2010 service packs and updates. This is very important as there is a history of unpredictable operation should the latest Microsoft updates not be installed.
2. For users running Office 2007 and 2010, include the C:\BEM path and any other locations where you save BEM or BemTrain files in the list of Excel Trusted Locations.

Method:

- 2.1. Open Excel.
- 2.2. Select **File** then **Options**.
- 2.3. Select **Trust Center**.
- 2.4. Click on **Trust Center Settings...** button.
- 2.5. Click on **Add new location...** button and add any required paths and select the **Subfolders of this location are also trusted** if appropriate and then click on OK to accept and close the dialog



- 2.6. . • Click on OK to close each of the dialogs until back in Excel which now can be closed.

=== End of Document ===